



**Miniature Pinscher**



**Manchester Terrier**



**Doberman Pinscher**



The German Pinscher Rescue Committee is under the umbrella of the parent club, The German Pinscher Club of America.

### Contact Information

**E-mail:**

gprescue@hotmail.com

**Website:**

<http://www.german-pinscher.com/rescue.htm>

*"Rescuing one dog may not change the world, but for that one dog, the world will be changed forever."*

**PRESENTED BY  
GERMAN PINSCHER CLUB  
OF AMERICA INC.**

This brochure is to aid in the identification of the GERMAN PINSCHER BREED.

This brochure is not intended to be an in depth explanation of the breed standard, but to point out emphatically the obvious points of differences in the four breeds often mistaken. With an explanation of the following five traits it should help eliminate confusion:

**Height**

**Weight**

**Appearance**

**Color Ears**

**Eyes Tails**



**German Pinscher**

## German Pinscher

Height: 17" to 20" measured from the top of the withers (top of the shoulder blade). Dogs and Bitches may be the same heights. Occasionally German Pinschers may be over 20" (around 21") and as short as 16". It is **HIGHLY** unlikely you will see GP's less that 16" or more than 21".



Weight varies from 30# to 44#. Again, highly unlikely you will see below or above these variables. GP's are a compact, short-bodied dog.

German Pinschers may have docked tails or natural tails. The ears may be cropped or natural.



Natural Ears



Cropped Ears



Natural Ears and Tail

**COLOR:** German Pinschers can be black & tan, shades of red, fawn and rarely blue & tan.

## Specific Traits



Wedge Shaped Head

Black Nose

Black Lip Liner

Black Eyeliner  
Eyes do not bulge.  
Oval shaped.

Black Toenails

## Comparison

### Minature Pinscher

Height: 11" to 11½" at the withers (top of the shoulder blade). Pet min-pins may be as tall as 15".

Min-pin colors include black & tan, red, blue & tan, chocolate & tan. Tails are docked 1/2" - 1".



11 inches



14 inches

### Min Pin Head

The Min-Pin has a "round" back skull, while the German Pinscher is flatter in the back skull.

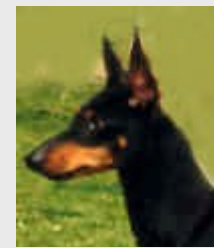
Eyes are round.



## MANCHESTER TERRIER

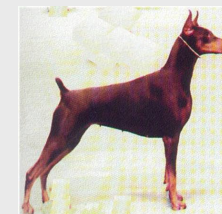
Weight: over 12 lbs. Not to exceed 22 lbs.

**APPEARANCE:** nearly square, sleek, sturdy dog. *Major difference, Manchesters always black & tan, tail is ALWAYS natural, no longer than hock joint NOT carried over back. Ears: erect button, small and thin. If cropped to a point long and carried erect.*



## Doberman Pinscher

The Doberman Pinscher is the largest of the Pinscher breeds. Breed heights "START" at 26" to 28+", bitches smaller at 24" to 26". This breed, when adult is easily recognized – but puppies may be mis-identified as German Pinschers. Difference is color: Doberman carries tan markings in all 4 colors. TAILS are usually docked, if ears are not cropped and erect, they fold down (hound type ears).



Only when Doberman puppies are between 3 and 5 months of age will they look like they could be a German Pinscher. A 5 month old Doberman puppy will have larger boning than an adult German Pinscher.

